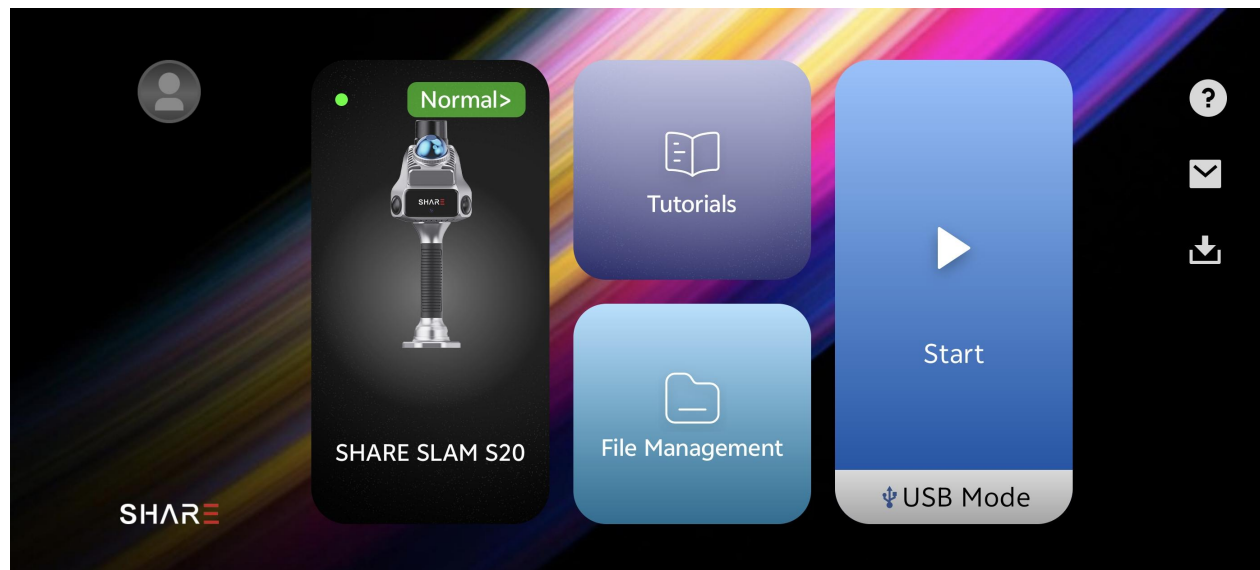


SHARE Captrue App Introduction V2.3.0



2025.09

Catalog

01 Software Introduction

02 Device Connection

03 Data Collection Process

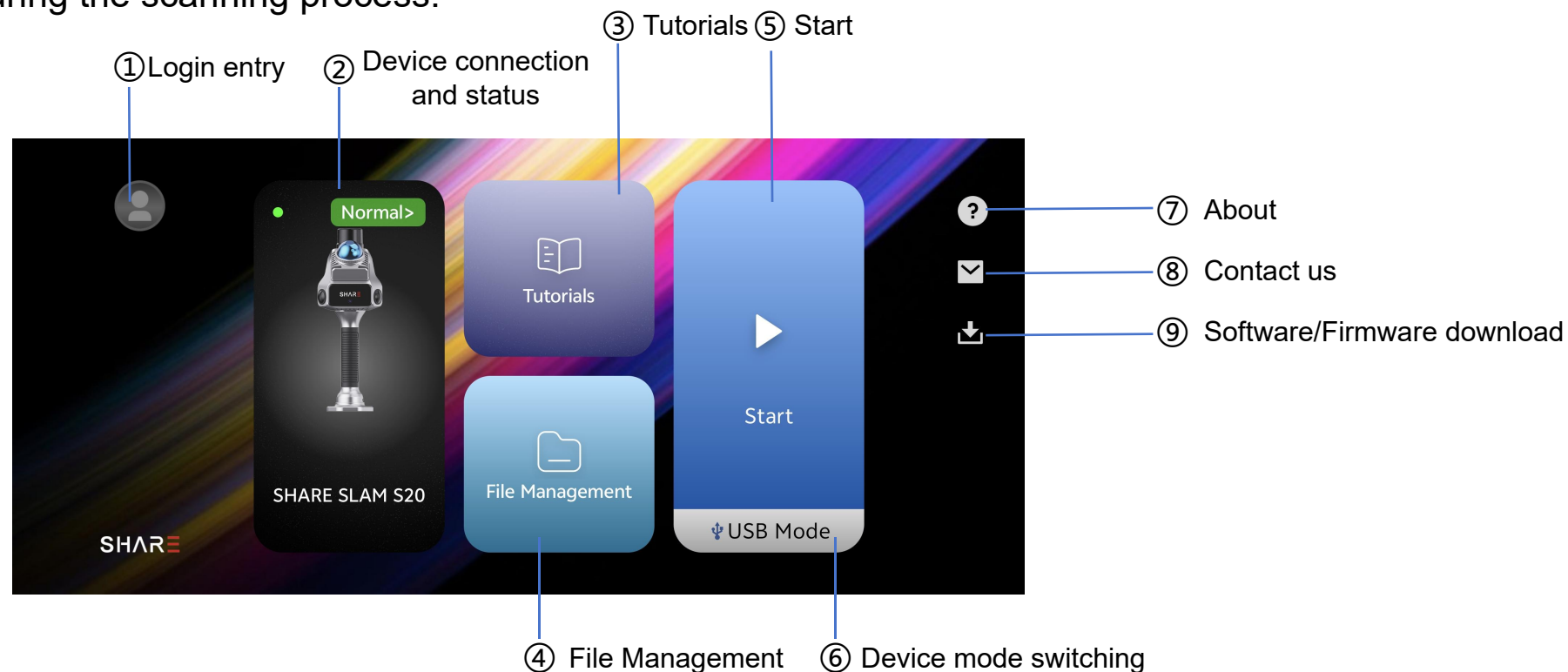
04 File Management

05 Firmware Download and Update

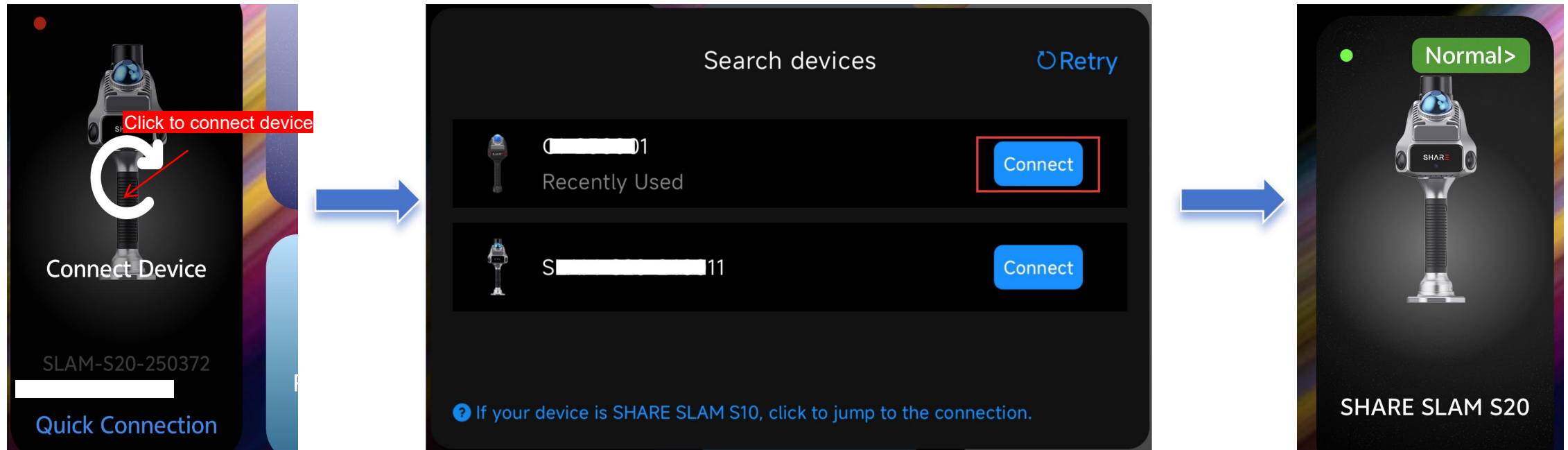
06 Contact US

SHARE Capture is a mobile app used with SHARE handheld LiDAR series products. Currently supports Android and iOS systems. The app provides functions such as device connection, firmware upgrade, and full-process visual scanning.

Users can interactively view real-time reconstructed true-color three-dimensional space point clouds, fully displaying rich information such as acquisition status, storage, power, RTK status, and network, to avoid missing or wrong acquisitions during the scanning process.



02 Device Connection——Standard procedure



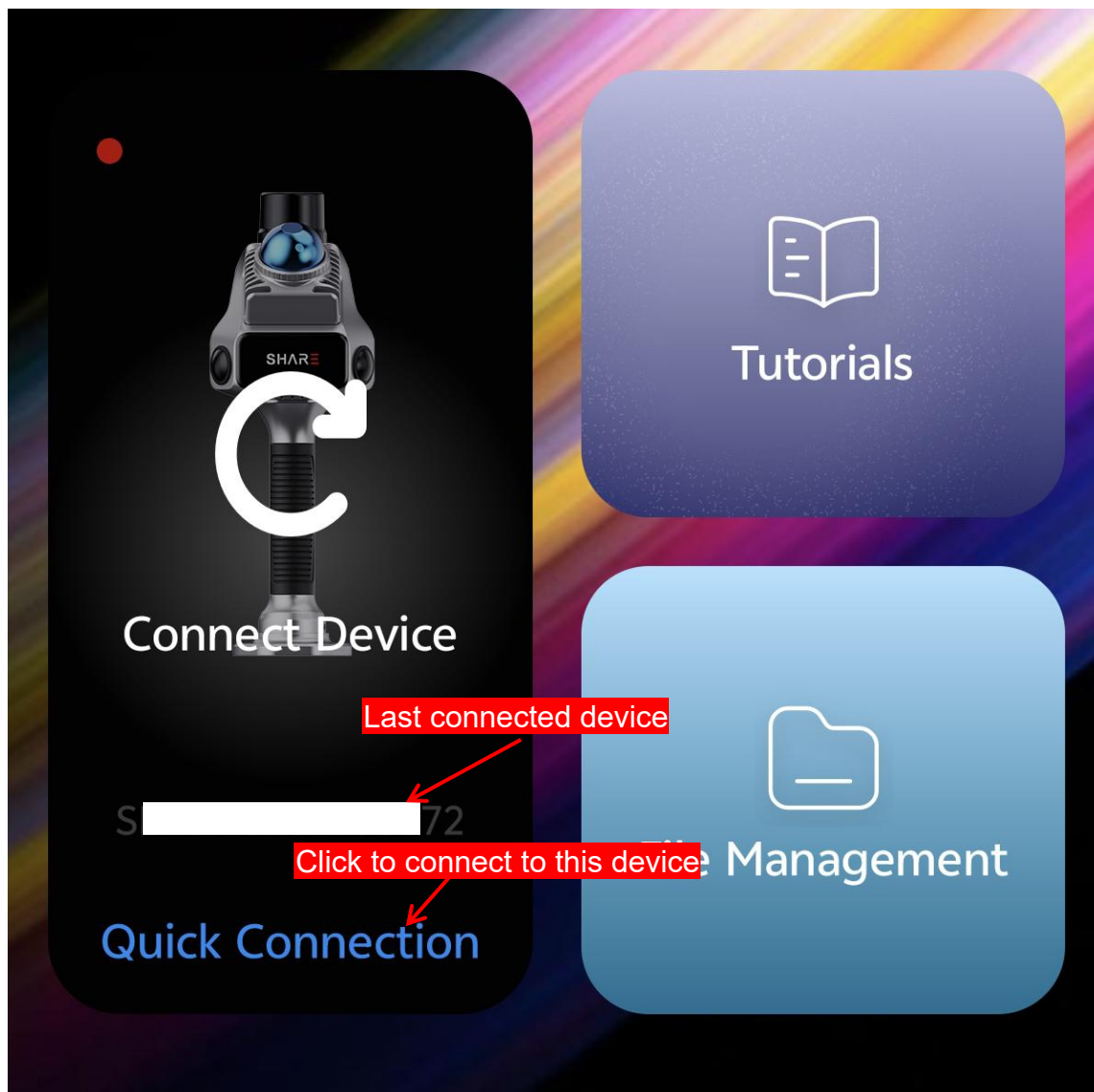
Step 1: Power on device. If the indicator light is always blue, the device is successfully started;

Step 2: Turn on "Bluetooth" and "WIFI" on your phone

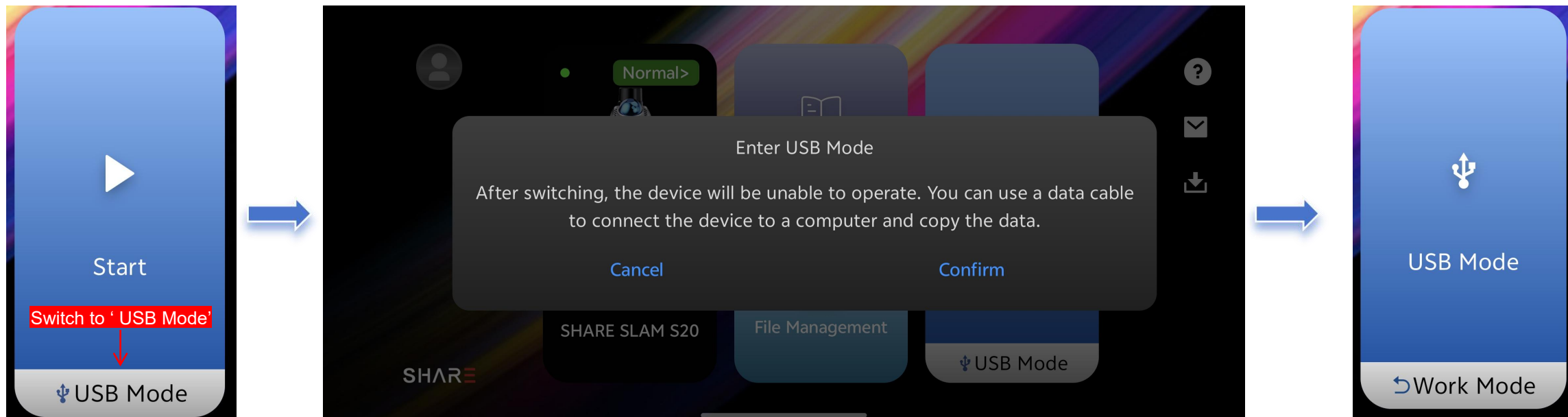
Step 3: On the app home page, click "Connect Device". The app will automatically search for nearby devices and generate a list of devices. Select the device you want to connect to. If your device is an S10, click the button at the bottom of the pop-up window to jump to the connection.

Step 4: Please wait a moment. Once the device is successfully connected, you can begin the work process.

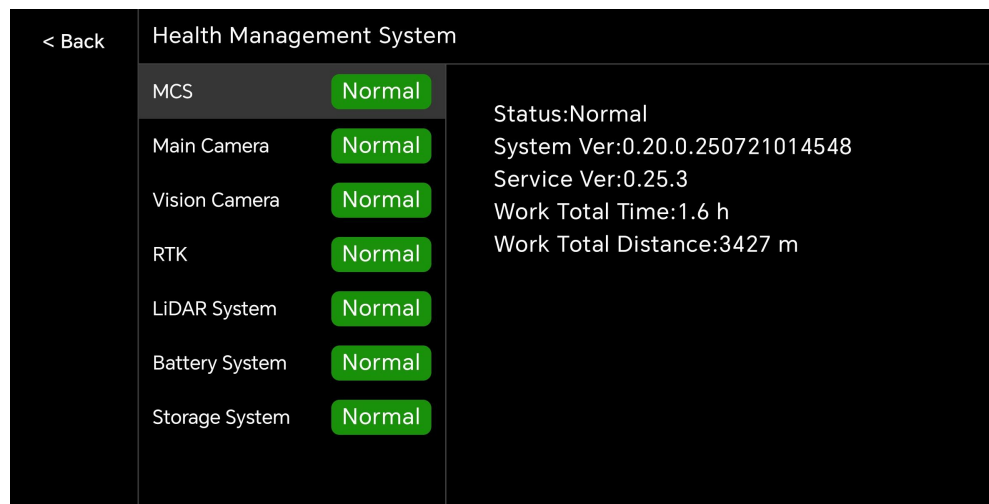
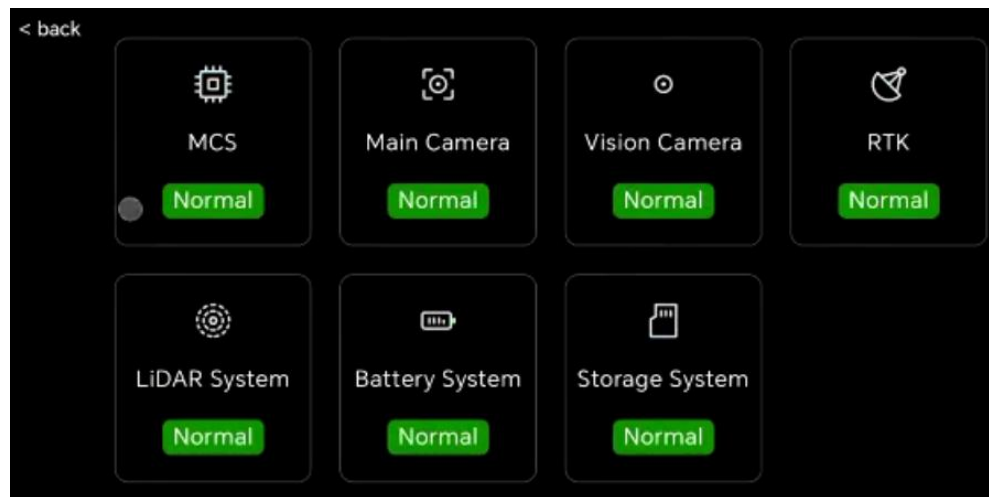
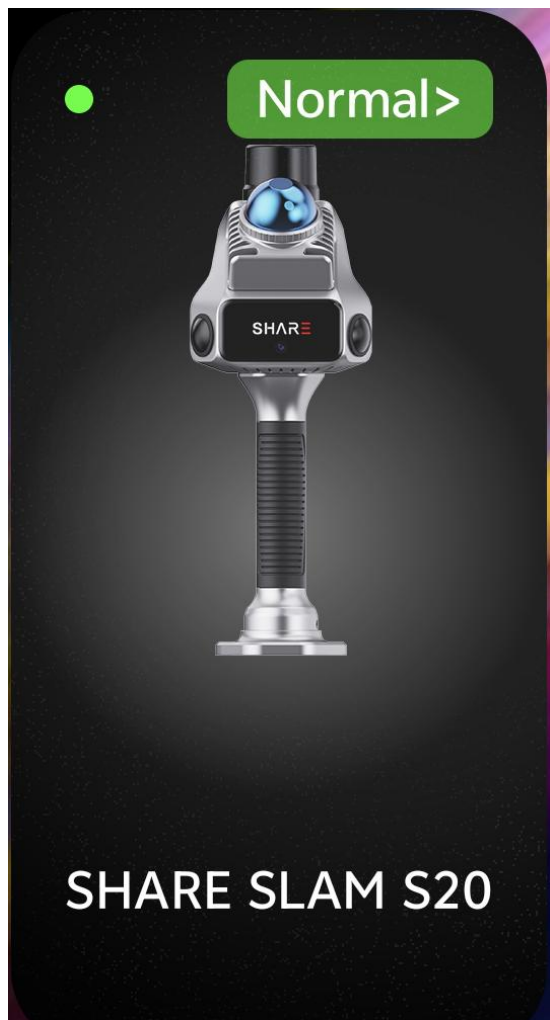
Note: If options such as "Do you allow "SHARE Capture" to discover and connect to...", "The "SHARE Capture" app wants to use a temporary WLAN network to connect to your device..." and "Do you allow "SHARE Capture" to obtain location information" appear during the device connection process, please allow these requests, otherwise the connection may fail.



The app will automatically remember the last connected device. Turn on the device and turn on the "WIFI" on your phone, and click "Quick Connection" on the mobile App to automatically search and connect to the last connected device.

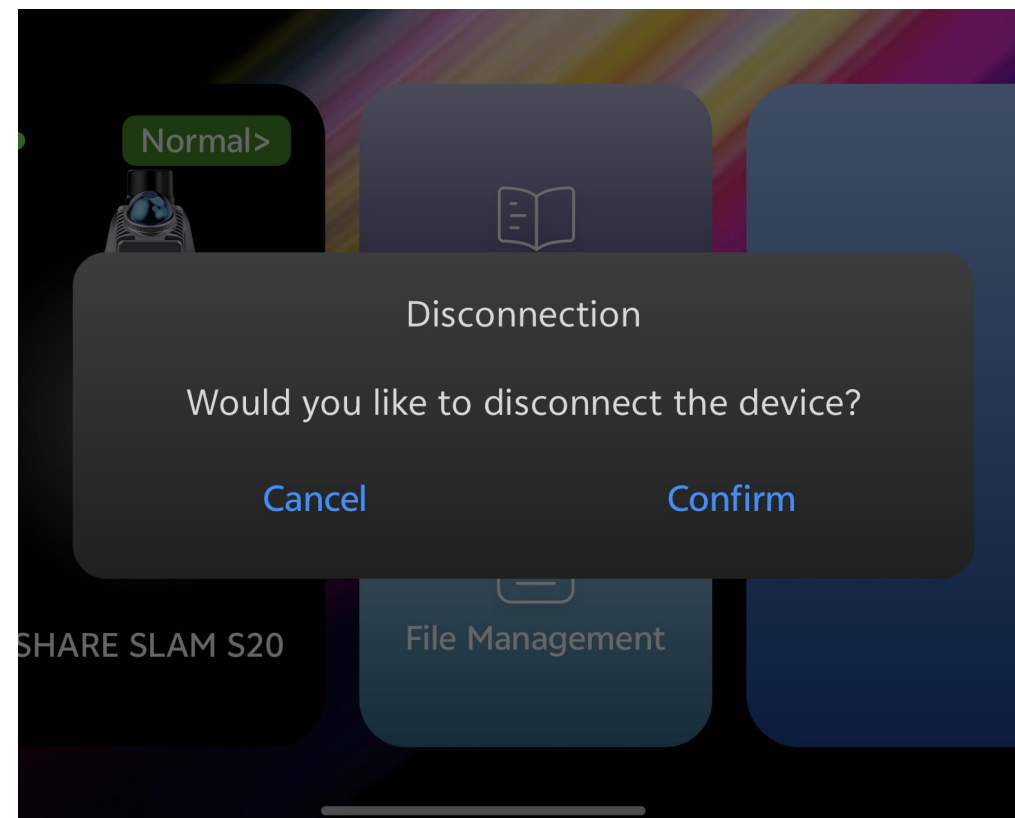
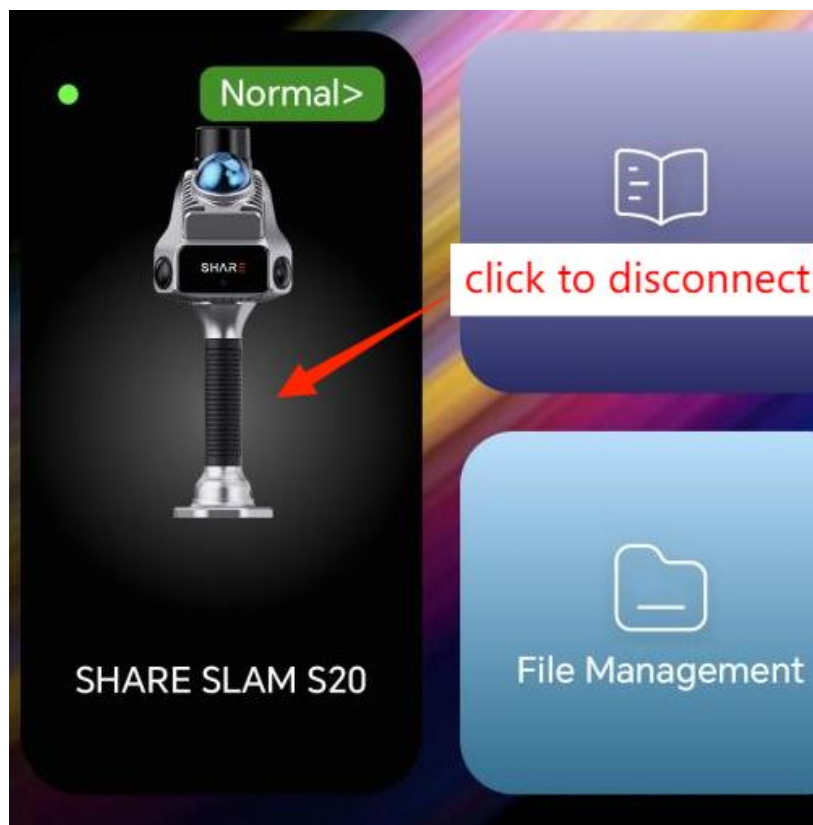


- The default setting is **"Work Mode"** for the device. Clicking the bottom of **"Start"** button will switch to **"USB Mode"**. After switching the device to **"USB mode"**, you can connect the device to your computer using a data cable, allowing you to easily copy the project data from the device.
- Click **"Work Mode"** at the bottom to switch back to **"Work Mode"**.



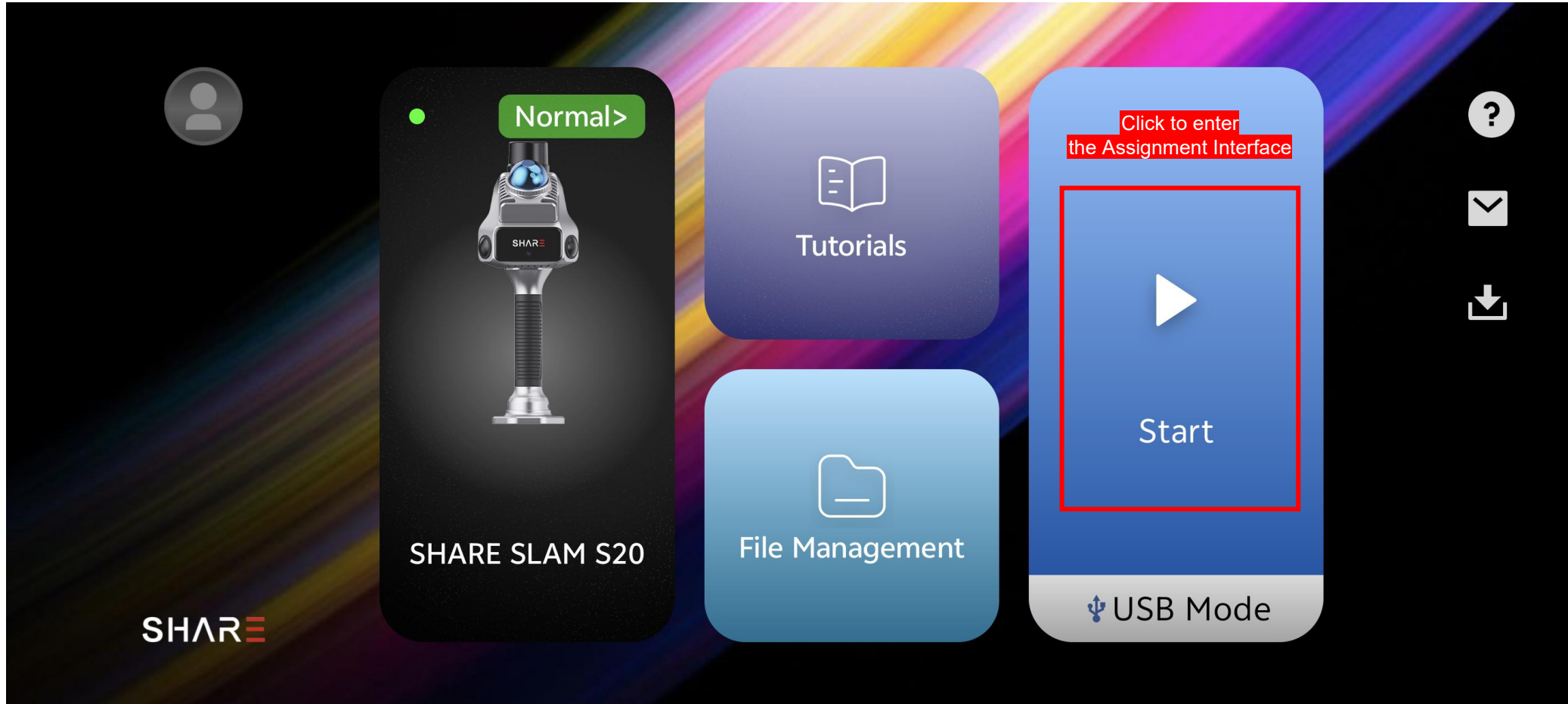
After the device is connected, click the "Normal" icon to enter the "HMS" system to view the health status of modules such as Main Control System, Main Camera, Visual Camera, RTK and other modules.

Click a module to view the detailed information of the module.



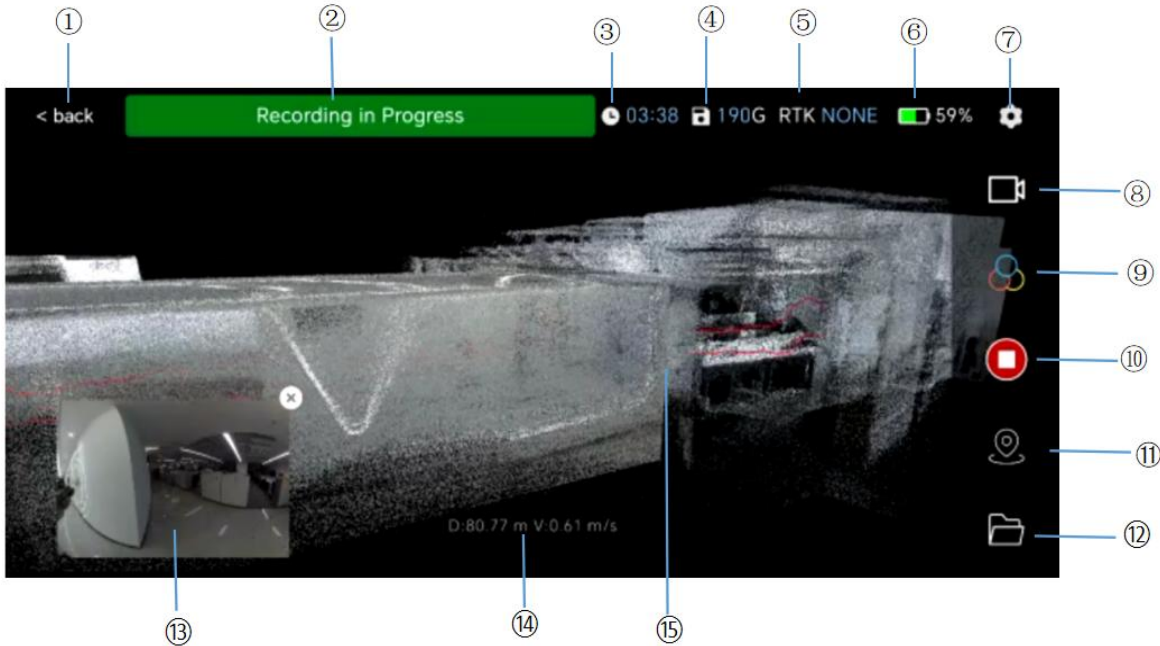
Click "**Device connection**" and the "**Disconnect**" option will pop up. Click "**Confirm**" to disconnect the device.

Note: This feature is only supported by the Android app. Clicking on it in the iOS app will have no effect.



On the main interface of the software, click "Start" to enter the assignment interface.

Assignment Interface Elements Introduction



① **Back** : Click to return to the main interface of the software;

② **Status notification area**: Equipment status information prompt area;

③ **Working Time**: Prompts the working time of the current project;

④ **Remaining Storage Space**: SD card remaining space;

⑤ **RTK Status**: Prompts the status of the RTK; Click to view details;

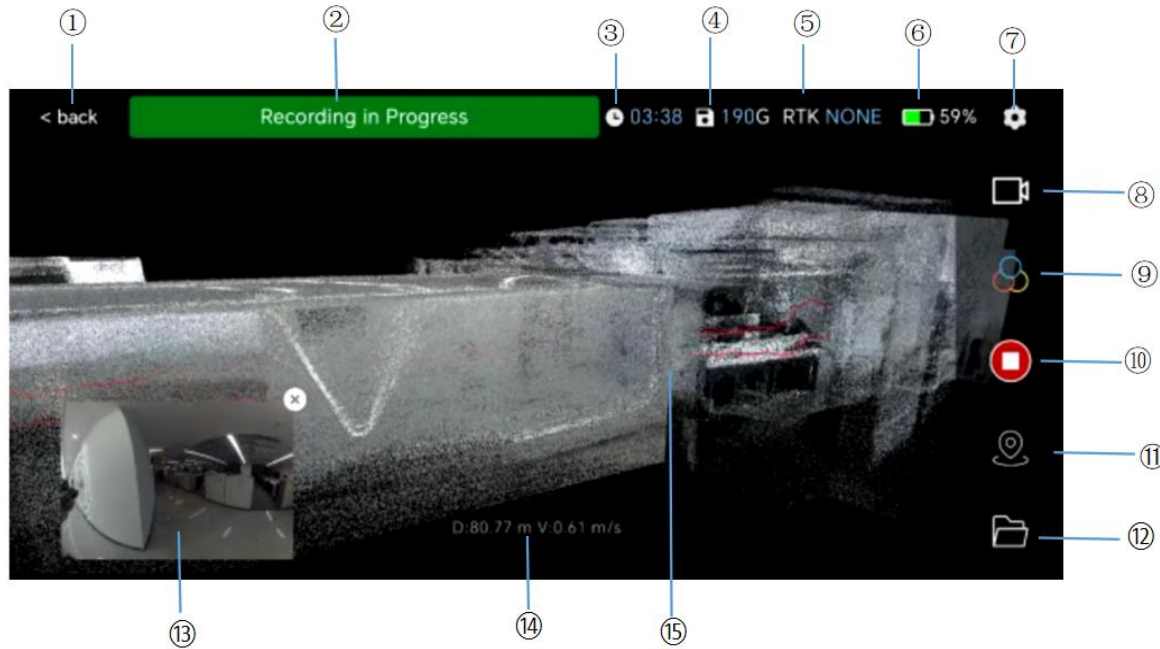
⑥ **Power**: Device power description;

⑦ **Setting**: Project parameter setting button, click to set relevant parameters;

⑧ **Roaming Mode**: Roaming mode switching, supporting free roaming, third-person view, and top-down follow modes;

⑨ **Point Cloud Mode**: Switch the display mode of point cloud in the three-dimensional scene. Supports three modes: color point cloud, intensity coloring and elevation gradient;

Assignment Interface Elements Introduction



⑩ **ON/OFF**: Control the start and end of project;

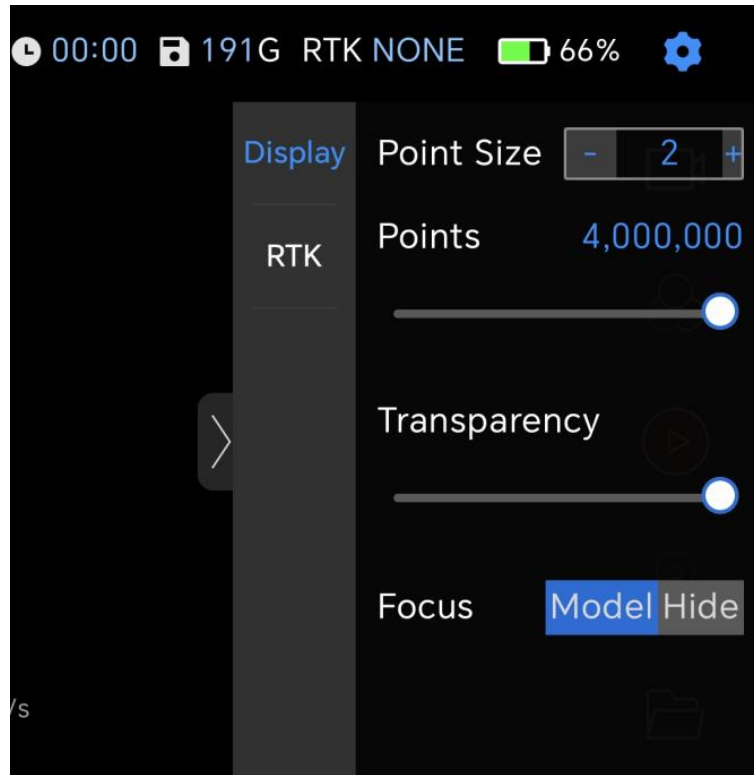
⑪ **Control Point Management**: Operations such as adding, deleting and covering control points of the project can be performed;

⑫ **File Management**: Jump to the file management page, where you can manage, delete, view and other operations on local (save in mobile) or device project data;

⑬ **Images**: View images information taken by the device;

⑭ **Cumulative distance/travel speed**: Displays the accumulated length of data collected in the current project and the current travel speed;

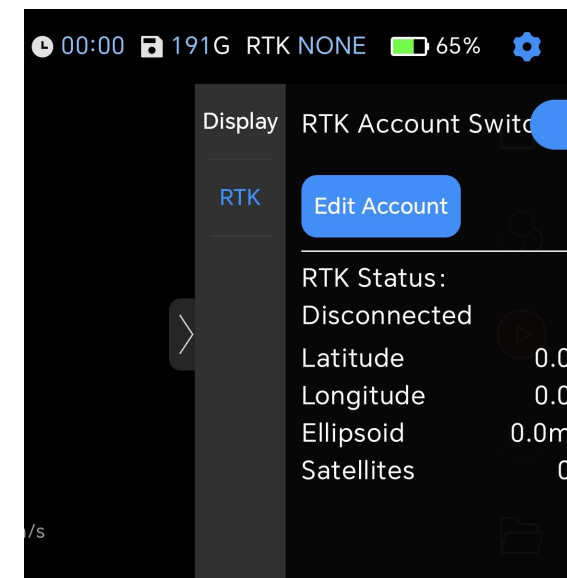
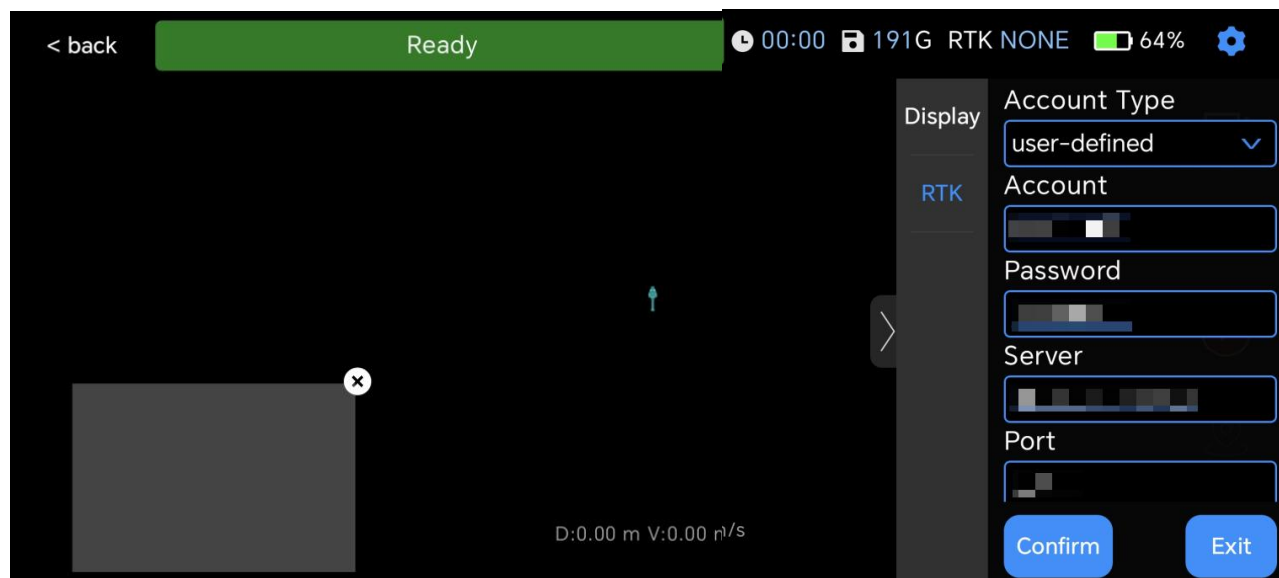
⑮ **Three-dimensional Scene**: Display point cloud and trajectory lines, and can be manually operated to view details.



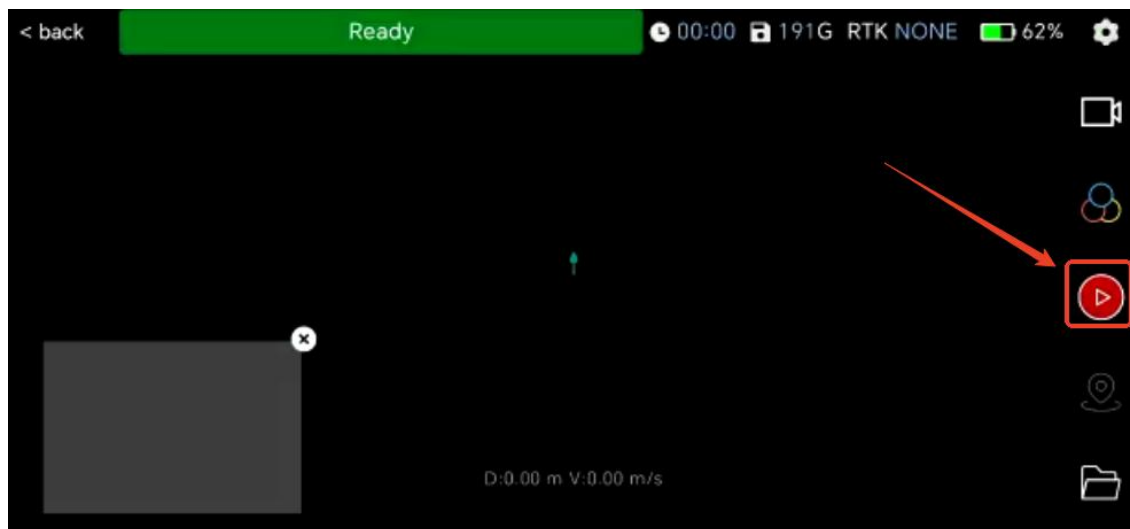
	Parameter	Describe
Display	Point Size	Set the size of the point cloud rendered in the app, ranging from 1-10
	Point number	The maximum number of point clouds that can be rendered in the app is 4 million
	Transparency	set transparency
	Focus	Control the visibility of the location model of the app device
RTK	RTK Switch	Control whether RTK is turned on

Click the **"Settings"** button to configure point cloud display, RTK account, and other settings.

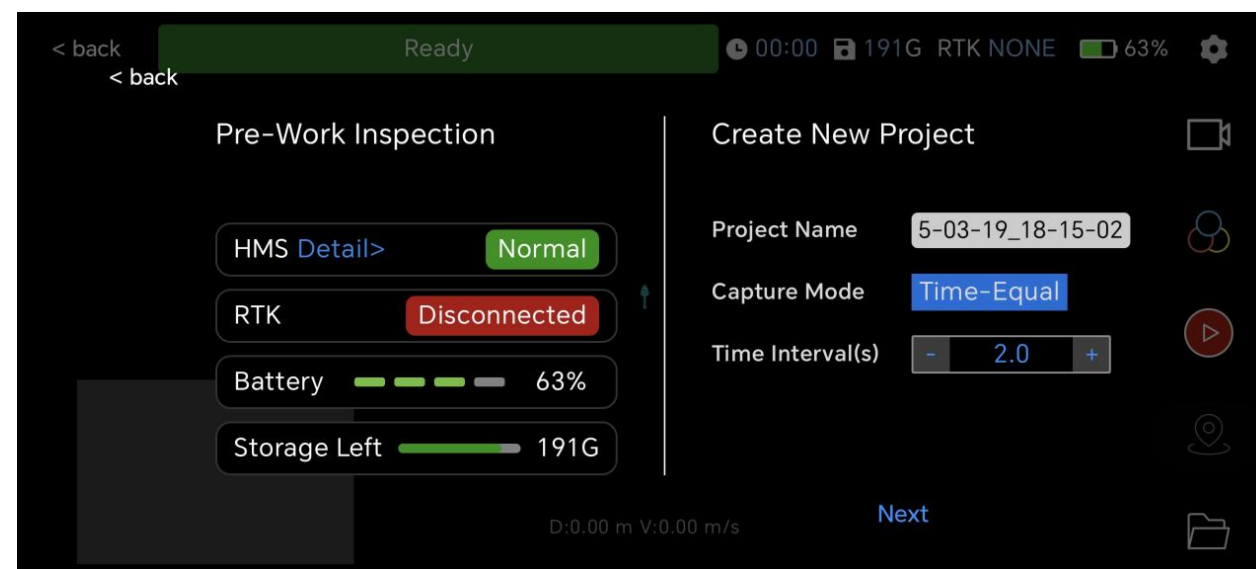
You can open RTK and log in to the network CORS account, which supports network CORS of NTRIP protocols. Using RTK can greatly improve data collection accuracy. We recommend that you enable this feature.

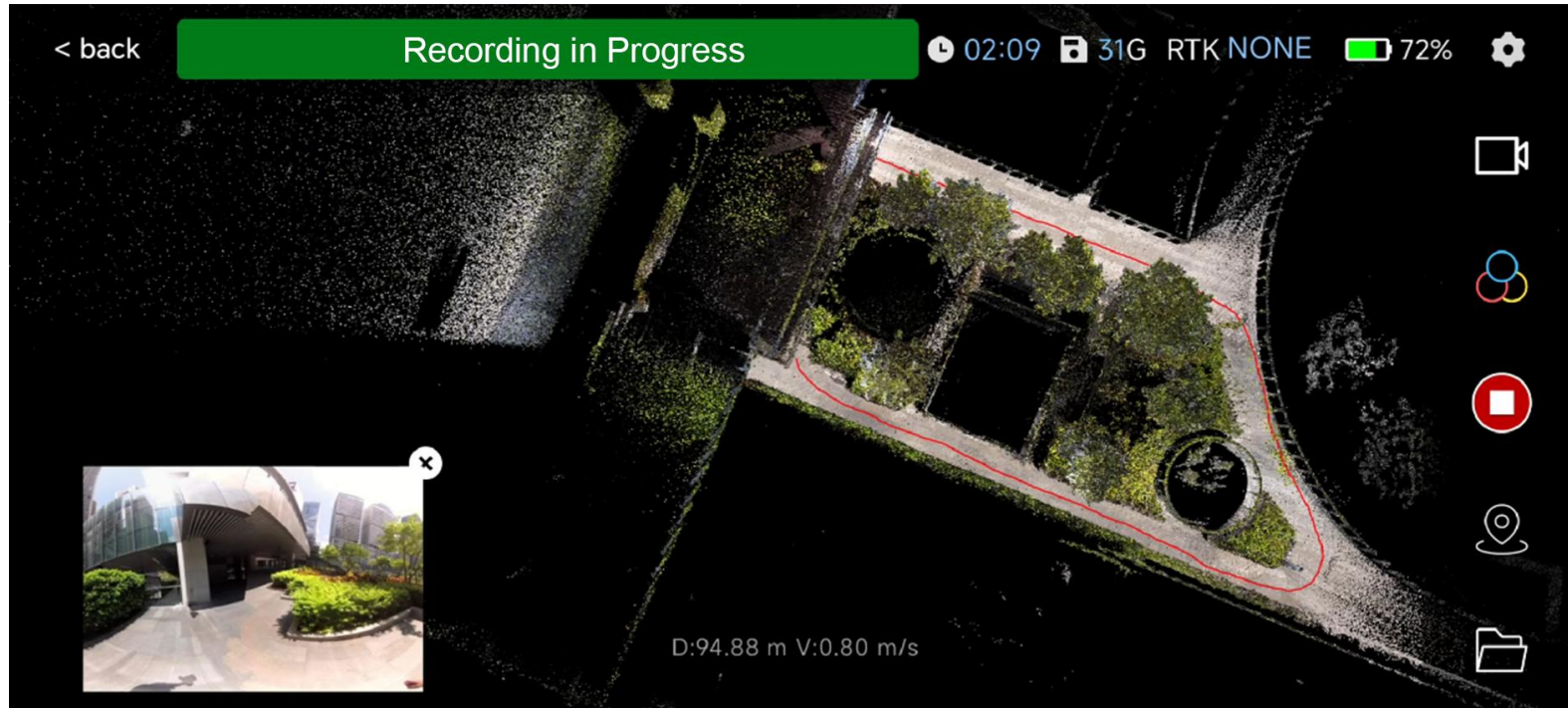


03 Data Collection Process — ③New Project



When the device status is "**Ready**", click the "Start" button to enter the "**Pre-Work Inspection and Create New Project**" pop-up window. Enter the project name and click "**Next**" to complete the job initiation process according to the prompts.





- The app displays the reconstructed three-dimensional space point cloud information and collection trajectory in real time, and you can manually view the spatial three-dimensional true color point cloud.

Scanning Tips

1. After starting scanning, keep the device steady and move at a slow speed.
2. If you find that the color point cloud on your phone is updating slowly, you can stand still and wait until the color point cloud on your phone becomes denser before continuing to move (it takes some time for the device to color the point cloud).
3. In order to better record the pipelines on the top of the building or the ground of the site, you can change the angle of the device upward or downward to scan the target area once more.
4. If you need to record a complete object, you can scan a circle around the object and scan the complete outer contour of the object in a closed loop.
5. If you need to record parts with information (signboards, posters, large screens, etc.), it is recommended to scan them while standing still for 1 to 2 seconds to improve the efficiency of coloring the object.

Guaranteed Better Coloring Effect

In order to obtain high-definition effects of specific parts of objects, it is recommended to wait 1 to 2 seconds at the location where high-definition data needs to be obtained when scanning to make the picture clearer.

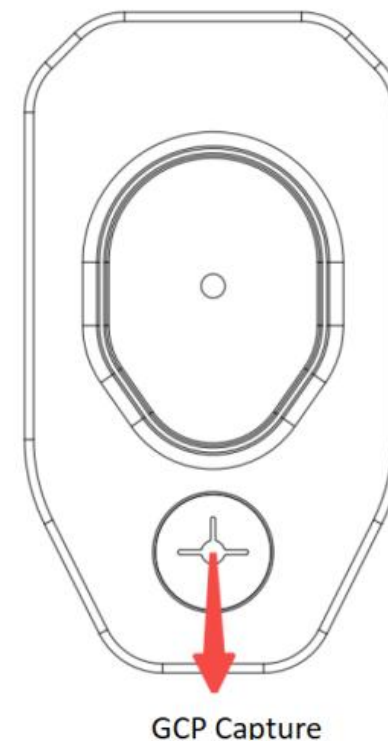
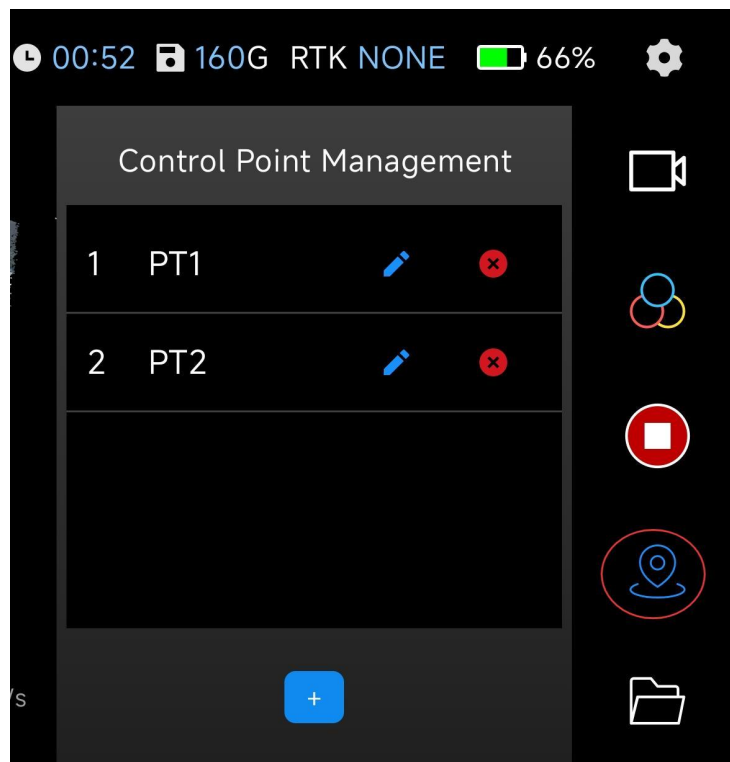
Prevent Data Degradation

In a small space or a single structure scene, there is a small probability of scanning degradation, which is manifested in the following: the "device point" on the screen quickly moves away from the actual position at an abnormal speed.

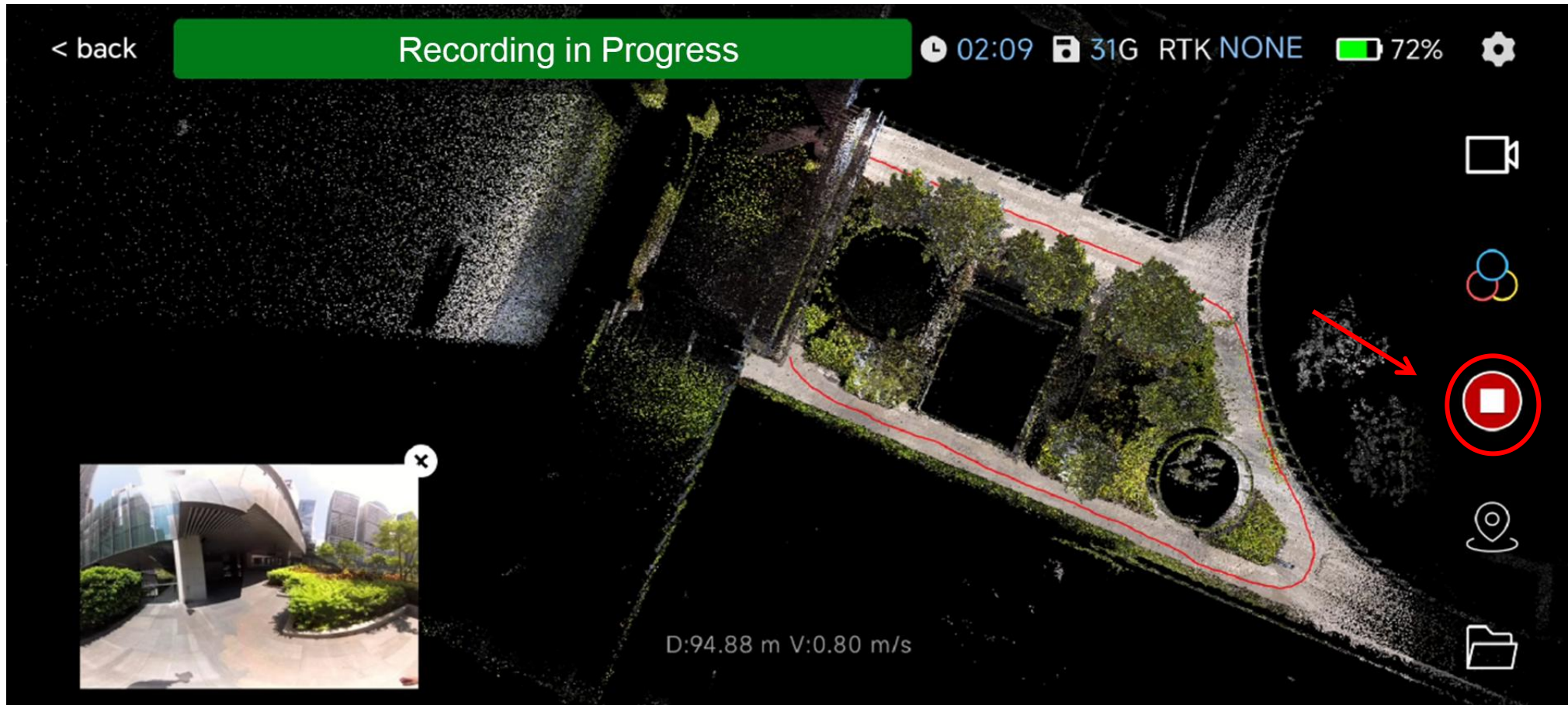
To avoid this phenomenon, when entering the above scene, please point the LiDAR toward a place with rich structures and a long detection range, and try to avoid the rotational movement of the LiDAR in such scenes; or start new project, and manually combine the two project data during post-processing.

Avoid Human Figures

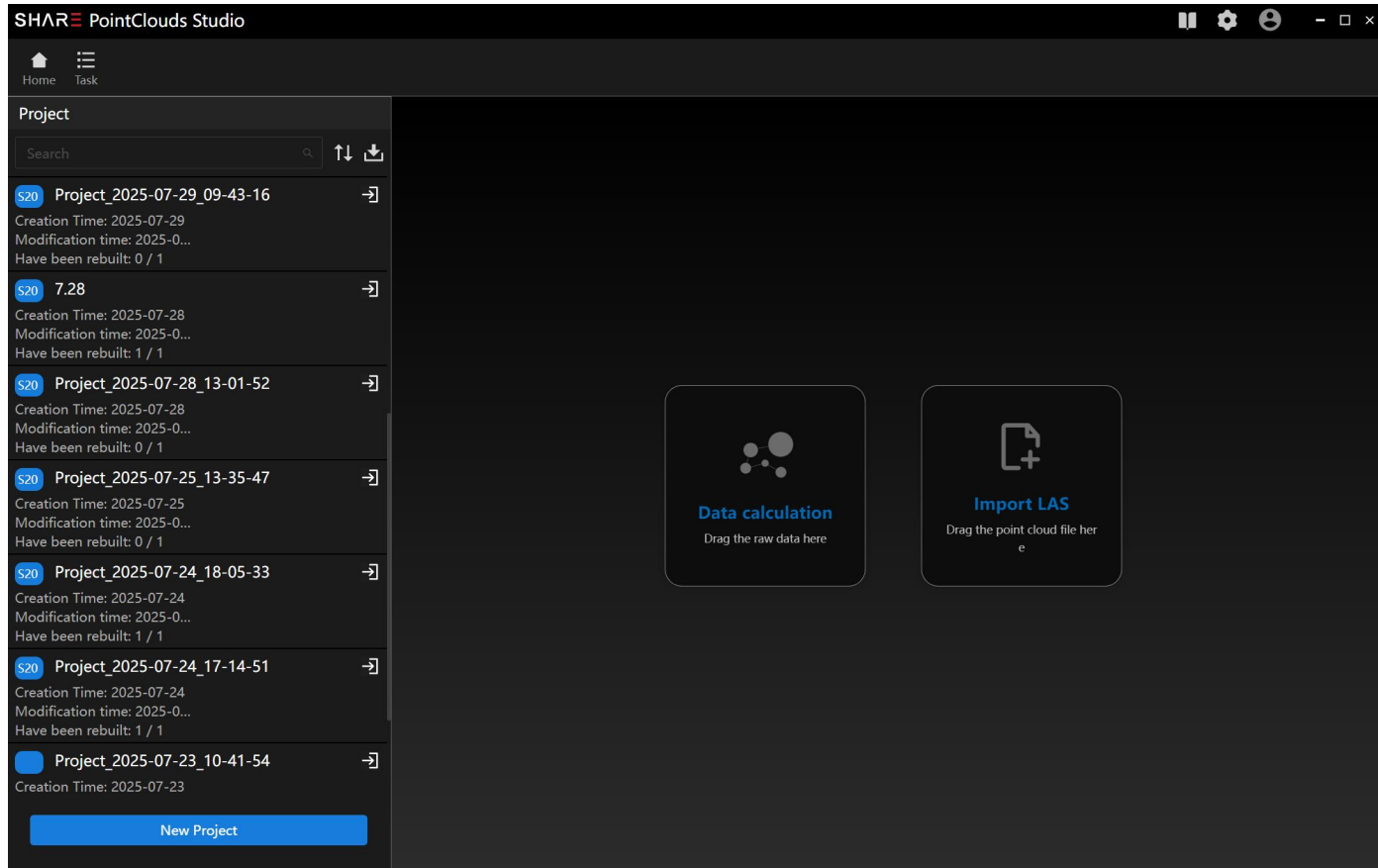
During scanning, please keep the device at an appropriate distance from the body and avoid having others nearby. This prevents the user or accompanying individuals from being scanned into the work, which could affect data quality.



- Click the "Control Point" button on the right side of the software to add new control points in the "Control Point Management" pop-up window, or to perform operations such as editor or deleting existing control point.
- When adding control points, align the centre of the positioning plate's control point collection area with the location where you want to add the control point. Then click "Add Control Point" on the app and keep the device stable for about 10 seconds to complete the collection.

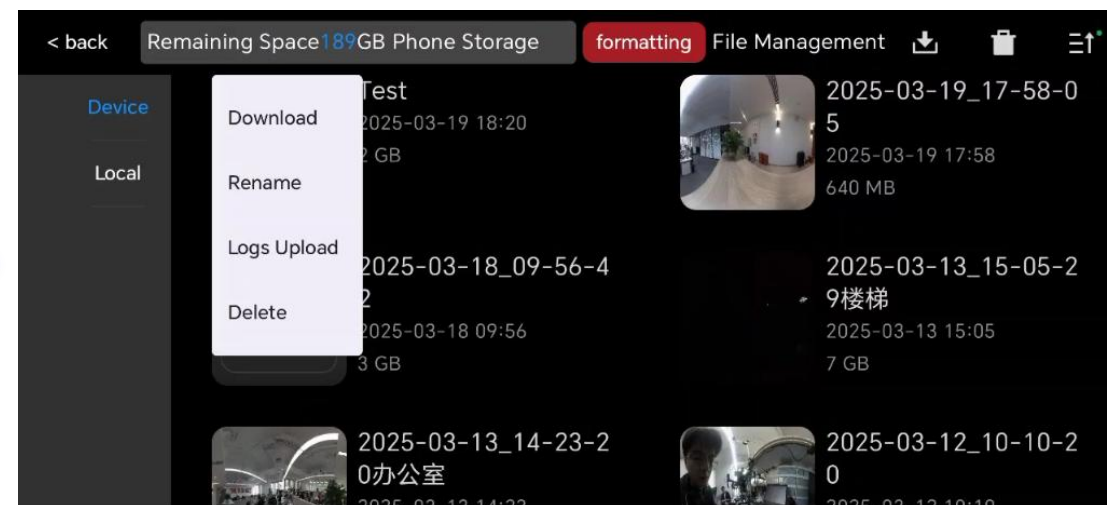
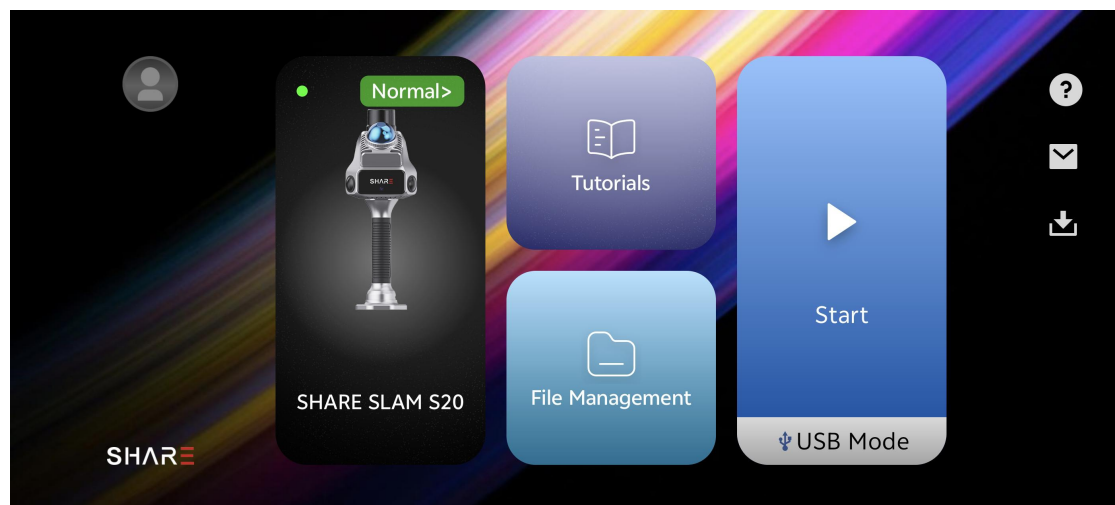


- Once data collection is complete, click the "End" button to end the current project's collection task.



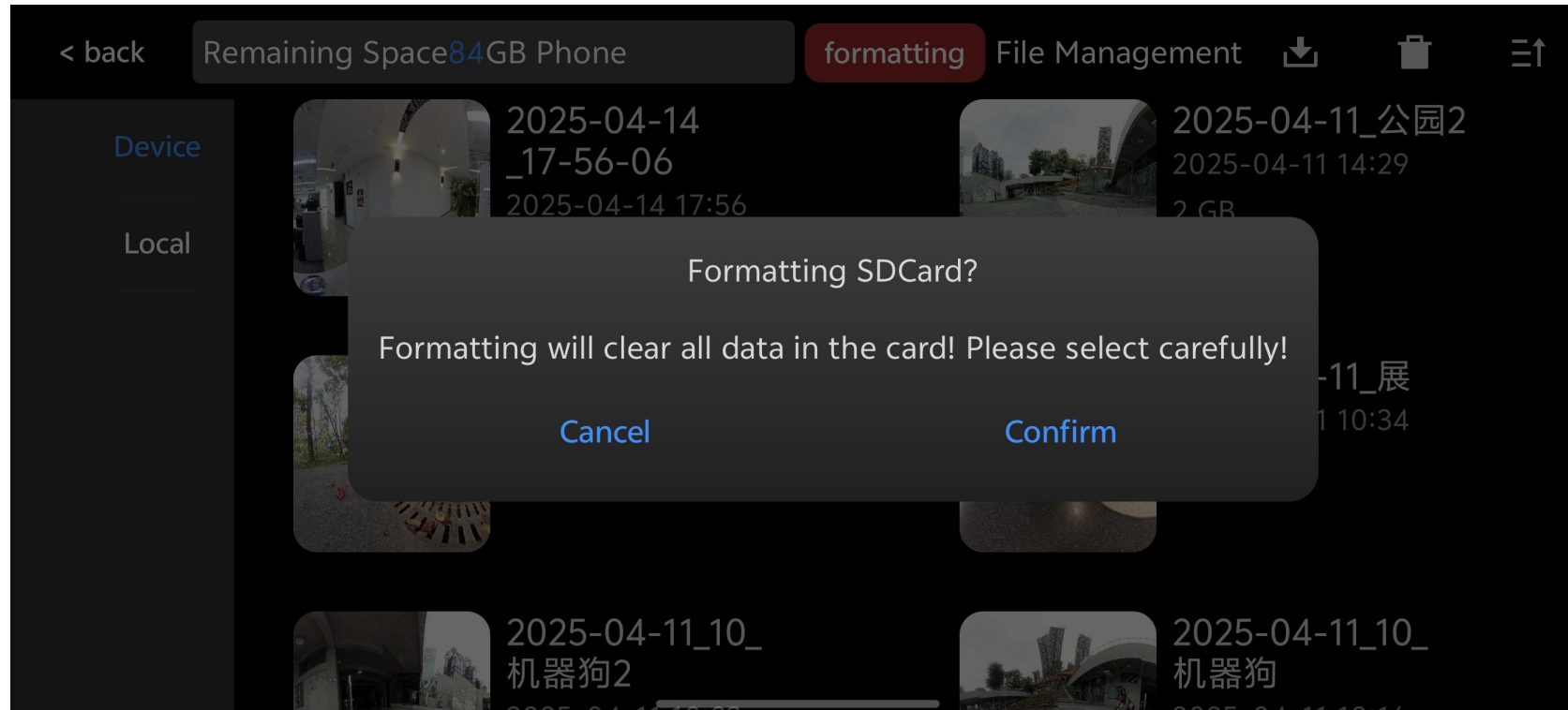
With the device turned off, remove the TF card and insert it into the card reader.

Insert the card reader into the computer and copy the corresponding project files to the local drive. Use the SHAR PointClouds Studio post-processing software to analyse the data and obtain high-precision point clouds.

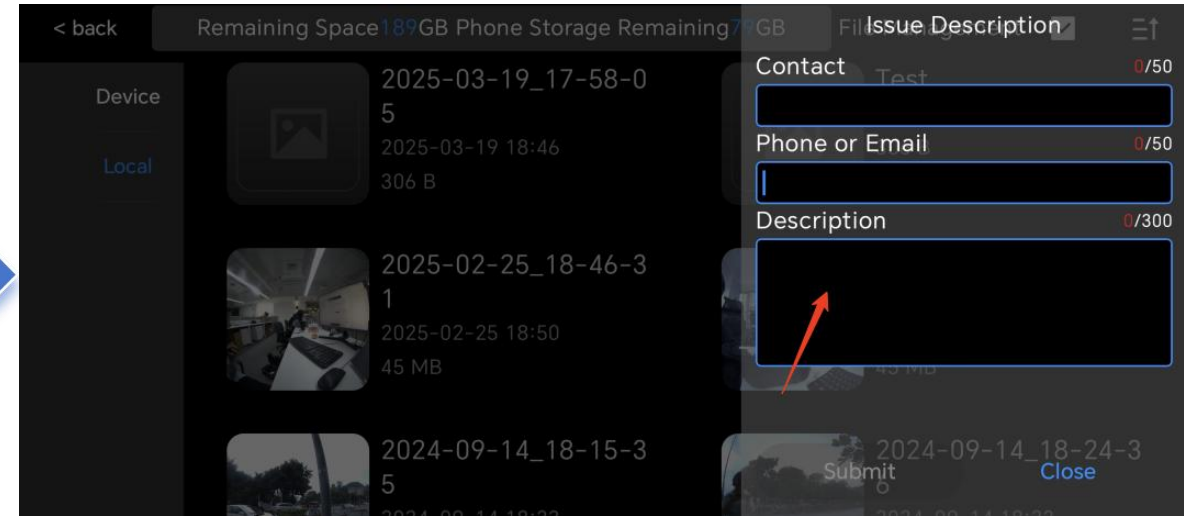
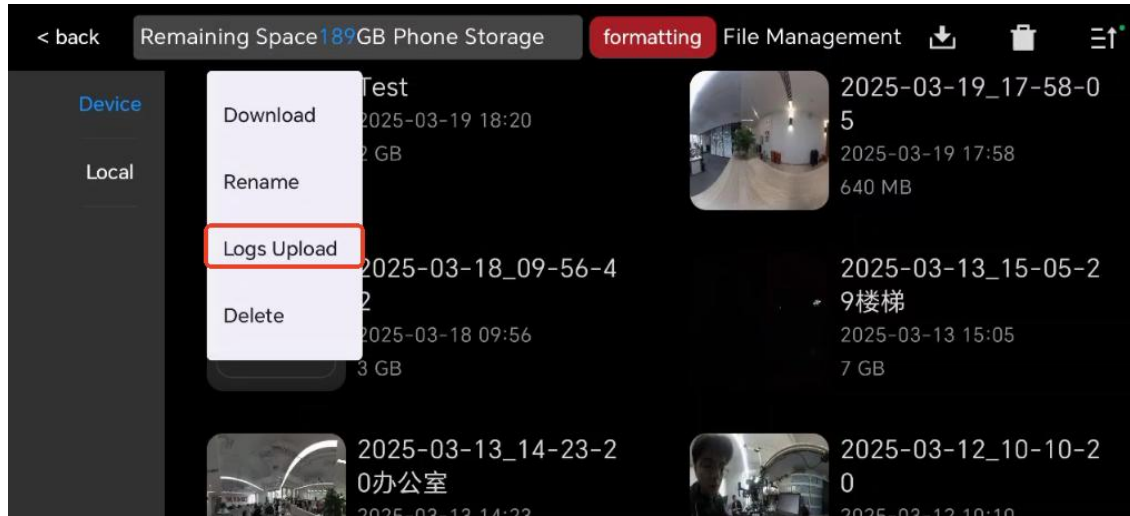


Click **"File Management"** on the main interface of the software to enter the file management page. Supports management of device files and local files.

When the device is connected to the App, you can **sort, rename, download, upload logs** and **delete** the device project files, and also support formatting the device TF card.



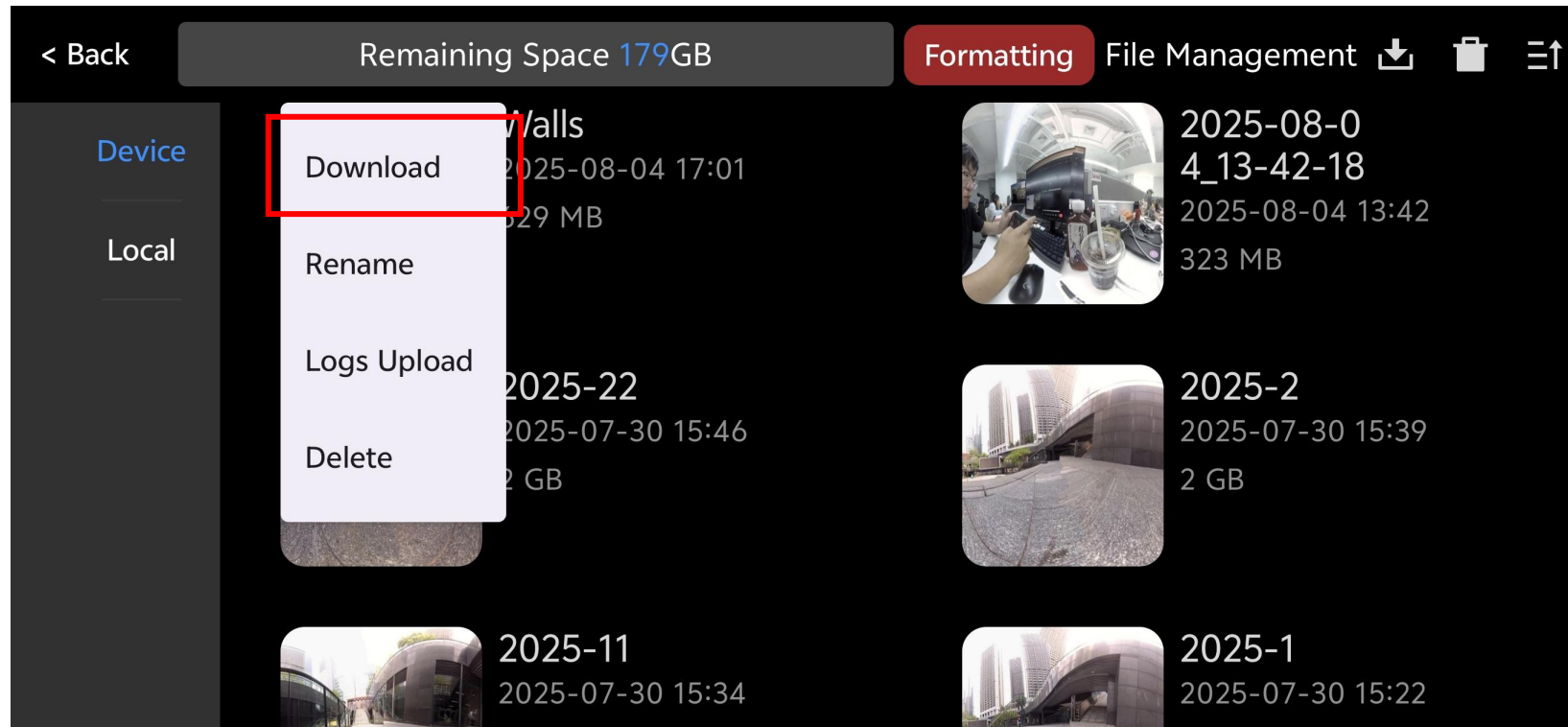
Click the **"Format"** button at the top to format the memory card. After formatting, all data on the memory card will be erased.



When an abnormality occurs during the scanning process, you can **contact SHARUAV's technicians first** and send the corresponding log file of the project. Click the project and click **"Logs Upload"** in the pop-up options, and a "Issue Description" pop-up window will pop up.

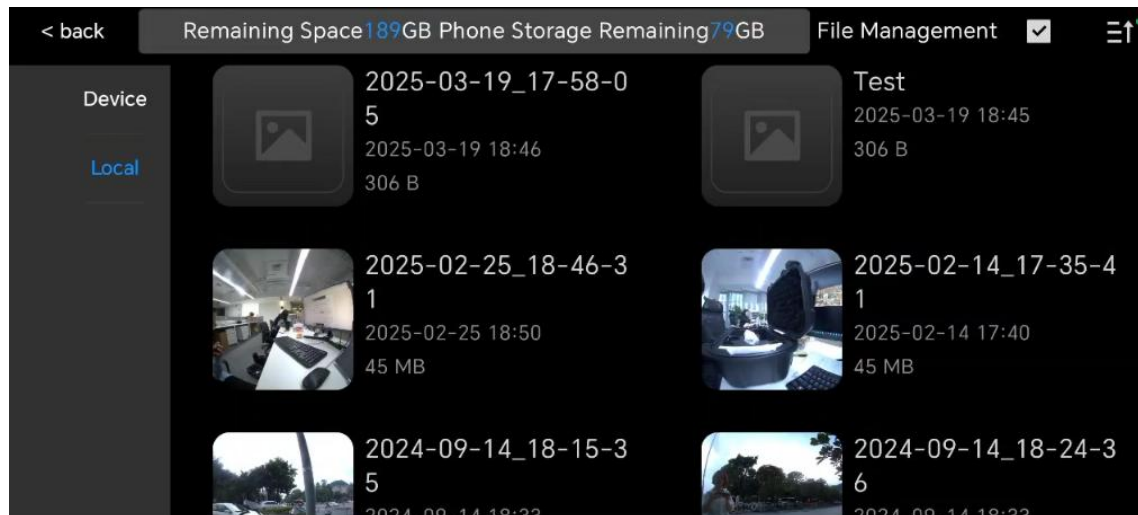
Fill in the relevant information in the "Issue Description" window and click the **"Submit"** button to upload the log file corresponding to the project.

1. Download project files

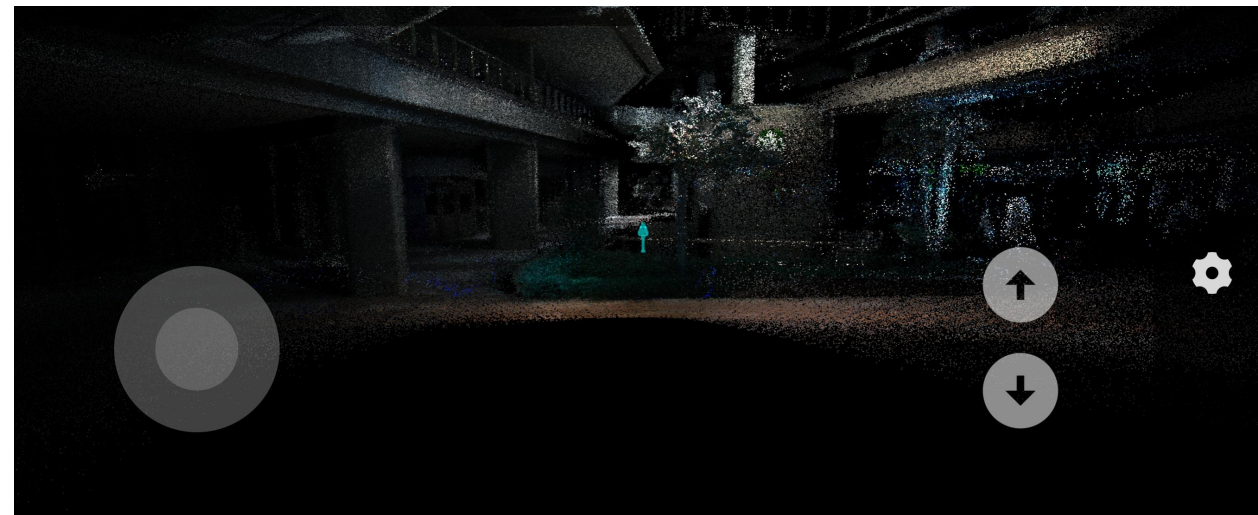


Long press to download the current project data. After the download is complete, a corresponding record will be generated in **" Local File Management "**.

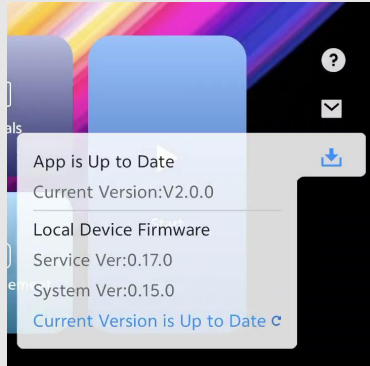
2. Review Data



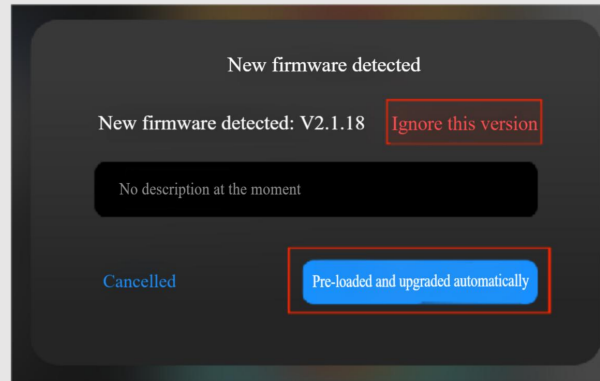
Switch to local file management and click on the corresponding project.



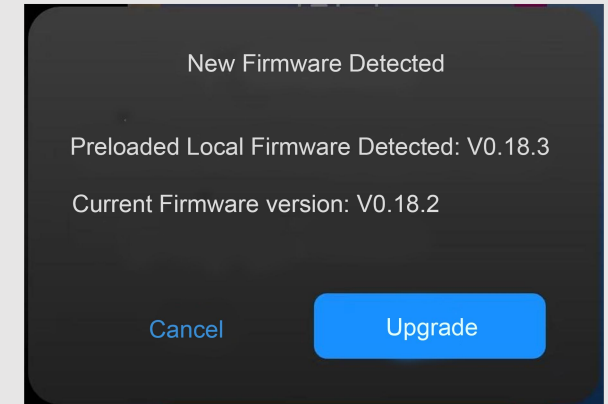
In the "Review" interface, you can browse the point cloud corresponding to the project.



- When the latest firmware is available, the app will pop up a prompt. You can also click "Upgrade Management" to view the latest firmware information.

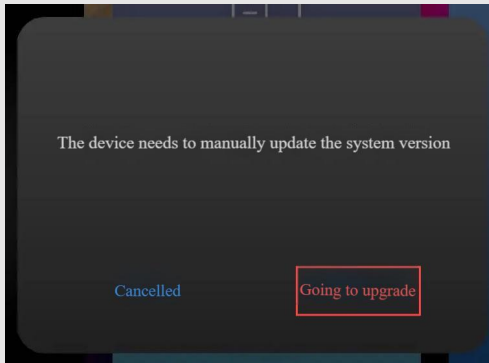


- Click "Pre-loaded and Updated automatically" to download the latest firmware to your phone.



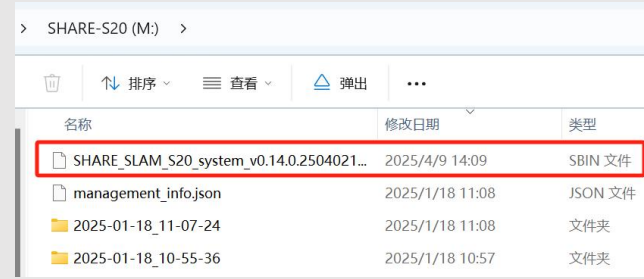
- Click the "Upgrade" button to upgrade the service firmware. During the upgrade process, the device may automatically restart several times. Please wait patiently.





1. System Firmware Download:

During the firmware upgrade process, the system firmware is checked to see if it meets the requirements. If it does not, the app will pop up a window to notify the user. Users can copy the relevant address to download the latest system firmware from the SHARE official website.



2. Before Upgrading:

Eject the device TF card and connect it to computer, copy the downloaded "**system firmware**" file to the **root directory** of the TF card, and then insert the TF card back into the device

3. System Firmware Upgrade:

Restart the device to perform the system firmware upgrade process.

The upgrade process will take a few minutes to ten minutes. When the blue light on the device stays on, it means that the device system firmware upgrade has been successful.



06 Contact Us



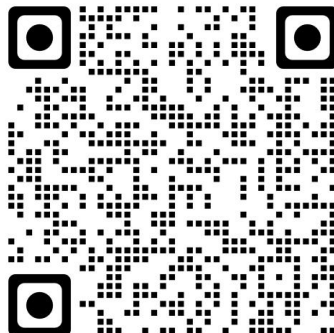
Officials Website



LinkedIn



YouTube



Facebook



Service Hotline:+86-755-23216686

Email : technical.support@shareuavtec.com